



UBUD, BALI



## CONTACT INFORMATION

### SALES CONTACT

Brooke Hall  
 Director, Sales & Marketing  
 +62 361 2091 888  
[brooke.hall@capellahotels.com](mailto:brooke.hall@capellahotels.com)

### ADDRESS

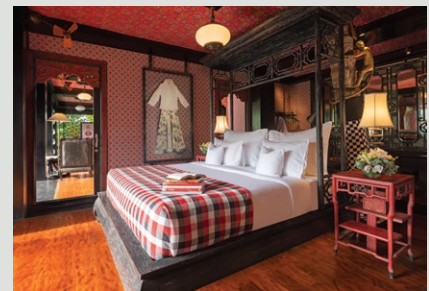
Jalan Raya Dalem, Desa Keliki,  
 Tegallalang, Gianyar,  
 Bali Indonesia 80561  
[capellahotels.com/ubud](http://capellahotels.com/ubud)

## OVERVIEW

Inspired by the early European settlers from the 1800s, celebrated architect Bill Bensley conceptualized Capella Ubud, Bali as a tribute to their spirit of adventure. Set within a dramatic terraced landscape and nestled between lush rainforest, rice paddy fields and the sacred Wos River, in an authentic Balinese artist village called Keliki, this refined tented camp is a hidden sanctuary from afar that truly captures the imagination of those who aspire a unique experience, that allows them to enjoy the essence of Ubud's untouched natural surroundings in personalised and stylish comfort.

## ART CURATION

The camp is adorned with handpicked valuable antique artifacts, books, paintings, drawings and furniture, some of which are from the owner's treasured private collection, and pays homage to the local craftsmanship and rich cultural heritage of Indonesia.



## AMENITIES

- Premium wireless Internet
- Indoor and outdoor rainshowers and a stand alone hammered copper bath
- Bespoke organic toiletries and a soap menu
- Salon-grade hairdryer
- A refreshment trunk offering daily complimentary non-alcoholic beverages and selected snacks
- Premium coffee machine and a tea station
- Daily seasonal fruit and infused water
- Welcome duffel bag containing camp essentials

## COMPLIMENTARY SERVICES

- Daily breakfast served at Mads Lange
- Daily camp styling including evening turndown
- Capella Culturist
- Return airport transfers for stays of 2 nights or more
- Daily return transfers to Ubud centre according to the camp's schedule
- The Officers Tent
- 24-hour exclusive access to The Armory and The Cistern
- Low and high impact guided group activities according to the camp's schedule
- 4 pieces of laundry per person, per day, exclusive of dry cleaning
- Use of mountain bikes

## ACCOMMODATION

All 22 one-bedroom tents and the 1 two-bedroom tented lodge are individually styled with a wink back to the early 1800s, balanced by modern conveniences and feature a private pool and large outdoor decks.

## ONE & TWO BEDROOM TENTS

5 tent categories offer distinctively enriching and unique experiences:

- 5 Terrace Tents (173 sq m), located near the camp central and the paddy fields, with an outlook to the rainforest
- 4 Rainforest Tents (173 sq m), offering a rainforest setting and view
- 8 River Tents (173 sq m), offering a tranquil Wos river experience. Secluded on a gradient in close proximity to the Wos river, this tent is best suited to the curious and able traveller
- 5 Keliki Valley Tents (173 sq m), offering the most dramatic, unobstructed and elevated Keliki valley view and the largest pools
- 1 two-bedroom tented lodge (217 sq m), blended into the terraced landscape and conveniently located in close proximity to The Cistern, The Lodge is best suited for a small family or a group of friends travelling together



### WEDDINGS AND SPECIAL EVENTS

From the most intimate of unions and anniversaries to the grandest of marriages, Capella Ubud, Bali has the style, immaculate attention to detail, a unique rainforest setting and unobtrusive service to exceed your dreams.

Locations available at the camp:

The Vos River Deck – Up to 12 guests.

The outdoor deck of your private tent – Up to 12 guests.

The outdoor deck of The Lodge – Up to 12 guests.

The deck of The Cistern – Up to 50 guests.

Please enquire after our options for private use and buy-outs.

### CULINARY EXPERIENCES

Mads Lange, the Camp's split-level tented dining room is named in honour of the famous Danish spice trader, entrepreneur and peace maker of Bali, Mads Johansen Lange, nicknamed "The White King of Bali". Offering an elaborate array of Indonesian classic dishes, designed for sharing in the manner of "Rijsttafel", served with a variety of locally harvested rice, using ancient recipes inspired by the spice trail across the Nusantara archipelago and international favorites.



Api Jiwa: Inspired by the Sanskrit word meaning 'fire to the soul', our chefs at Api Jiwa create bold flavors inspired by Asian omakase served in a lively and uniquely designed open-air restaurant. Watch the magic happen around the Chef's counter or at the private dining table for a course by course journey through unexpected bites and exciting tastes showcasing the best local produce from Bali.

The Mortar & Pestle Bar: Offers light poolside snacks and health-conscious options inclusive of a wide range of cocktails and potions. All beverages are locally inspired and handcrafted using traditional methods inclusive of a mortar and pestle and manual ice crusher, in order not to interrupt mother nature's beautiful rainforest sounds and delights.

The Officers Tent: Exclusively reserved for camp residents, is the camp's living room where morning coffee, afternoon tea and evening cocktails and canapés are served. A wide range of books, International magazines, a billiard table and board games are available for our guests' entertainment.

The Camp Fire: Meet a local storyteller over pulled hot chocolate and toasted marshmallows under the stars, enjoy a silent black and white movie showcasing Bali life of yesteryear or take part in a casual camp fire supper.

In tent dining takes on an entirely different role at this camp where an assortment of stacked tiffin boxes forms the basis of your private buffet dinner set up that is prepared entirely to your liking.

Bespoke private dining can be arranged on request, ranging from intimate candlelit dinners, to private picnics and barbecues at superb jungle and rice paddy locations.



### WELLNESS AND FITNESS

Work out in style at the camp's jungle-based tented gymnasium The Armory which features a state-of-the-art line-up of workout equipment, free weights, TRX strength stations and the barre for barre-based classes.

The Cistern, the 120 sq m outdoor rainforest pool, located at camp central, lends itself perfectly for laps, whilst our Camp Rangers offer a series of low and high impact guided adventure wellness activities ranging from yoga to jungle boot camps, Tae Bo, rice paddy tracking and village biking.

Auriga Wellness, named after a constellation in the northern hemisphere, bases its unique and distinctive approach on the different lunar cycles in line with the local Balinese and Hindu traditions and features a diverse choice of pampering and healing spiritual journeys.

#### Auriga Wellness Amenities

- 3 spa tents (two doubles and one single)
- In-tent nomadic treatments
- Resident healer
- Highly specialized local healers further complement the on-site expertise and modalities inclusive of sound healing, Pilates and Gyrotonics

### CRAFTED LOCAL EXPERIENCES

A Capella Culturist is on hand prior to your arrival and throughout your stay with us, attending to your every desire so that your experience will be truly memorable.

### AWARDS

2020 - Travel+Leisure World's Best Award –  
" #1 Hotel Overall, #1 Resort Hotel in Asia, #1 Resort Hotel in Indonesia"

2019 - CondeNast Traveller - Readers' Choice Awards " #1 Top 20 Hotels in Bali, Indonesia", " #41 Best 50 Resorts in The World"

2019 - PURE Awards - Mindful Design

2019 - Prix Versailles The World Architecture and Design Award – Special Prize Exterior

2019 - AFAR – Stay List, "Best New Hotel in The World"

2019 - CondeNast Traveller – Hot List  
"Best New Hotel in The World"